

Please be aware of the following points before using the Audiophase KP3000.

Copyright© 2006, Audiophase. All rights reserved Windows NT®, Windows 2000®, Windows ME®, and Windows XP® are registered trademarks of Microsoft Inc. Apple® and Macintosh® are registered trademarks of Apple Computer Inc. All other brand or product names are trademarks of their respective companies or organizations.

Audiophase will not be held responsible for any illegal use of this product nor any losses incurred as a result of use of this product. The user is responsible for the copyright laws, and is fully responsible for any illegal actions taken.

Table of Contents

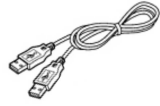
Technical Specifications.....	4
Package Contents.....	5
Precautions.....	6
Control Guide (Front View).....	7
Control Guide (Back View).....	8
LCD Display Guide.....	9
Copying Files to the Player.....	10
Copying Files using Windows Media.....	12
Copying Files using Windows Explorer.....	13
Operating the Unit.....	15
Volume Control.....	16
Repeat A-B Function.....	16
Battery Compartment.....	16
USB Connector.....	16
Mode Control Operation.....	17
Menu Options.....	18
Voice Record Funtion.....	19
Settings: EQ Function.....	20
Settings: Repeat (Playback).....	21
Settings: Auto Off Function.....	22
Settings: Rec Setting Function.....	23
Settings: Language Function.....	24

Settings: LCD Contrast.....	25
Settings: Backlight.....	26
Settings: Lyric Function.....	27
FM Radio.....	28
Flash Drive.....	31
Deleting Files.....	31
Troubleshooting.....	32
Disclaimer.....	33
Warranty.....	33
Tech Support.....	34

Technical Specifications

- Supports USB specification version 2.0
- Transferring rate up to 12M bit per second at “Full Speed”
- Hot plug & play
- Durable solid-state storage – 10 year data retention
- Erase cycles: 100,000 times
- Supports music formats: MP3 & WMA
- LCD display: 96 x 32 Dot Matrix
- Earphone jack: 3.5 mm
- Audio output: 5mW + 5mW
- Output frequency range: 20Hz – 20KHz
- Battery life: Up to 12 hrs
- EQ Choices: Normal/Rock/Jazz/Classical/Pop
- ID3 tag display
- Digital Voice Record in ADPCM 8kbps
- Repeat read function (A-B)
- Unit weight: Approximately 30g (not including battery)
- Bit rates supported: 8Kbps ~ 256Kbps
- S/N ration 85dB ~ 90dB
- Size: 99 x 31 x 22 mm
- CE and FCC certificate of approval
- Supports DRM10

Package Contents



USB Cable



Stereo Earphones



Manual




AAA Battery

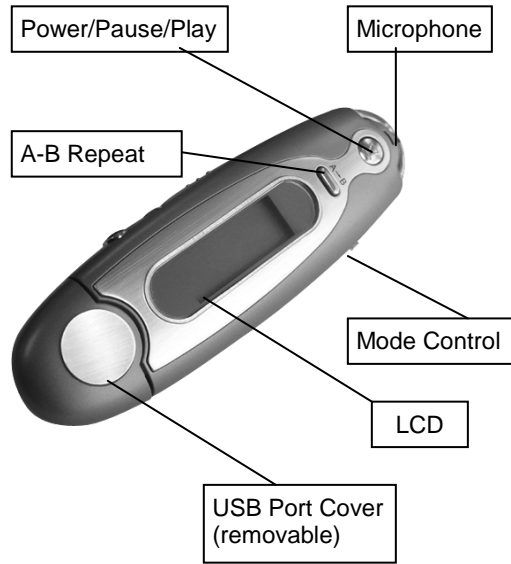


Lanyard - Neck Strap

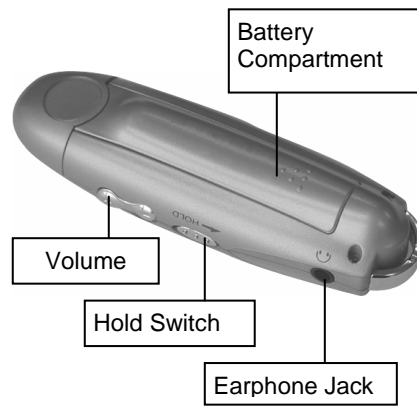
Precautions

- 1.) If there is a plastic protective sleeve on the AAA battery provided with this unit, please remove the sleeve prior to insertion into unit.
- 2.) The battery should be removed during extended periods of non-use.
- 3.) The MP3 player should be kept in areas free from extreme temperatures, moisture and dust.
- 4.) The MP3 player cannot be turned on if the HOLD switch is in the ON position.
- 5.) Please change the battery when the indicator in the upper right corner of the LCD looks like this .

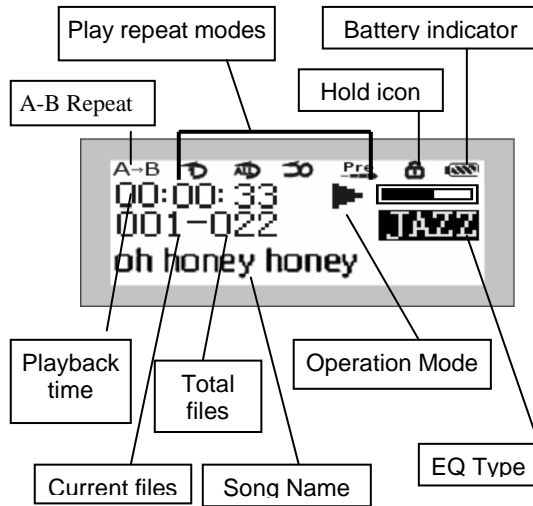
Control Guide
Front View



Control Guide
Back and Side View



LCD Display Guide



Repeat modes: Repeat One, Repeat All, Shuffle, Preview and Normal

EQ modes: Normal, Rock, Jazz, Classical, Pop

Operation modes: ■ Stop ■■ Pause ▶ Play

▶▶ Fast Forward ◀◀ Rewind

Copying Files into the Player

Loading music into the unit is a two-step process.

- 1) Files must first be “ripped” from a CD or downloaded to your PC from an internet site. Follow your O/Ss protocol for this step.
- 2) Files are then copied to your player from your PC. Before you begin loading music from your PC to your player please be advised of the following:

In order for your PC to copy files to the player, your PC must have at least one available USB port, and be running Windows 2000 or later. Drivers for other operating systems and firmware updates are available at

<http://www.tggroup.com/esupport.htm>

This player is compatible with files in the WMA and MP3 formats. When purchasing music from an internet site, be sure that the files are WMA or MP3 only.

Copying Files into the Player (Cont'd)

Windows Media Player can rip files from CDs to your PC and store them in the WMA format on your hard disk. Most “ripping” software will automatically retrieve title and track information from the internet and insert that data into the WMA or MP3 files as they are created. If you find that ripped files are labeled “unknown album” And/or “unknown artist”, then your security and/or firewall settings may be blocking retrieval of this information .

Files can be copied to your player using one of the following methods:

- Windows Media Player
- Windows Explorer

Both methods are described on the following page.

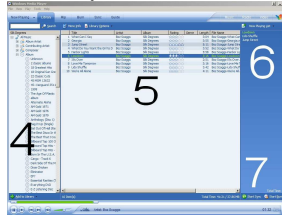
Copying Files

Using Windows Media Player

The Illustration below shows the copy process using Windows Media Player 10.

Please note: Detailed instructions for using the various versions of Windows Media Player are available on the internet at www.microsoft.com

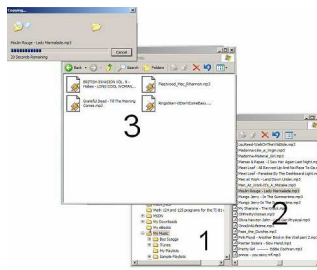
- 1.) Insert the player into the USB port
- 2.) Close the window that appears
- 3.) Open Windows Media Player
- 4.) Select an album
- 5.) Select the files you wish to copy
- 6.) Drag the selected files to the Sync List (Please note that on earlier versions of Windows Media Player, the “Sync” function may be called “Copy”)
- 7.) Click “Start Sync” to transfer the files



Copying Files

Using Windows Explorer

- 1) Insert player into the USB port
- 2) A window will pop up. Close this window.
- 3) Open "My Computer".
- 4) Locate the player. It may be displayed as "MTP Device", "MP3 Player" or "Removable Disk"
- 5) Double click on the player and navigate to the folder containing the music files. Leave this window open, but re-size it to occupy a small part of your desktop.
- 6) Open Windows Explorer. Navigate to the folder on your hard drive that contains the WMA or MP3 files that you wish to copy to your player.
- 7) Drag and drop the files from your computer to the player as shown below (2 and 3)



Note: Only 256 songs can be stored in the “root” directory of a Flash Drive based player regardless of how much excess memory is available. To overcome this limit, we recommend that you place the songs in nested folders such as Artist Name/Album Name. To make nested folders manually, right click an empty space on your desktop, then choose NEW → FOLDER. Use the artist name for this folder. Open the Artist Name folder and create a folder inside with the name of the album. Drag and drop this nested folder to the player and delete it from your desktop. Now you can drag and drop the tracks to this artist/album folder on the player.

Operating The Unit

Battery Insertion

If there is a plastic protective sleeve on the battery, remove it prior to insertion

- 1.) Remove the USB port cover
- 2.) Remove the battery cover by sliding it off
Properly insert the battery into the compartment.
Observe +/- direction
- 3.) Slide battery cover back into place
- 4.) Replace USB port cover

Power/Play/Pause button

On/Off – To turn the unit on or off, press and hold the power button for 3 seconds.

Play function – When the unit is turned on, files will be in the default Stop (■) mode. Simply press and release the Power button to start play.

Pause Function – If you want to pause the current file, simply press and release the power button. Pressing the power button again will resume play.

Hold Switch

When the hold switch is moved into the ON position (in the direction of the arrow), all other controls are locked. To unlock these controls, move Hold switch back into OFF position

Volume Control

Press and hold + to increase volume

Press and hold – to decrease volume

Repeat A-B Function

This player has the ability to repeat certain parts of a file continuously. This is a useful tool for things such as language memorization.

- 1.) Play the desired file
- 2.) When you reach the part of the file that you want to use as the starting point, press the A-B button. This marks the beginning of the section.
- 3.) Continue playing the file until you reach the point at which you want the repeat cycle to end. Press the A-B button again to mark the end. The section that you have set to repeat will now do so continuously until you cancel the function.
- 4.) Cancel the function by pushing the A-B button

Battery Compartment

Please note that the USB port cover must be taken off in order to remove the Battery cover.

USB connector

Remove the USB port cover to expose the USB connector

Mode Control Operation

The Mode Control has two functions:

When pressed, it gives you access to the unit's menu options.

When pushed to the right or left, it acts as a scroll tool, FF & REW.

To Fast Forward within a file:

Push Mode control to the right and hold. When ►► is displayed on the LCD, the file is fast forwarding.

Note the elapsed time on the LCD. When it reaches the point you desire, release mode control .

To Rewind within a file:

Repeat above process, except push Mode Control to the left and look for ◀◀

To Fast Forward to the Next File:

Option 1 - When in play mode, push Mode Control to the right and release immediately. The firmware may limit use of this function. If you are unable to FF using this method, use Option 2

Option 2 - Push and Hold the Mode Control to the right until ►► appears. Release to original position, then quickly push to the right again and release immediately.

To Reverse to Previous File

Repeat above process, except push Mode Control to the left and and look for ◀◀

Menu Options

- 1.) To access the player's Menu Options, press down on the Mode Control

Here are the 6 menu options available to select from:

<u>Music :</u>	This is the default music mode
<u>Record:</u>	Voice Record Mode
<u>Settings:</u>	Choose various player settings
<u>Information:</u>	Shows available memory
<u>Version:</u>	Displays Firmware version
<u>Exit:</u>	Exits menu

- 1.) To select a menu option, use the Mode Control to scroll forward or backward to the desired option.
- 2.) Once on the desired option, quickly press and release the Mode Control .

Voice Record Function

There are two ways to record using the Voice Record Function:

Option 1

- 1.) Press and hold the A-B button for 3 seconds
- 2.) The player will begin recording immediately
- 3.) Terminate recording function by pressing the Power button

Option 2

- 1) Press the Mode Control to view Menu Options
- 2) Using the Mode Control, scroll to the RECORD icon
- 3) Once on RECORD, quickly press and release the Mode Control
- 4) The player will begin recording immediately
- 5) Terminate recording by pressing Power button

Information Function

To determine the available memory on the unit:

- 1.) Press the Mode Control to see the Menu Options
- 2.) Scroll to the INFORMATION icon
- 3.) Quickly press and release Mode Control
- 4.) Total Memory (capacity) and Free Memory (available) Will be displayed

Settings: EQ Function

There are 5 EQ modes to select from:

Normal, Rock, Jazz, Classical & Pop To change the EQ mode

- 1.) Press and release the Mode Control
- 2.) When the Main menu options are displayed on the LCD, use the Mode Control to scroll over to the SETTINGS icon
- 3.) Press and release quickly
- 4.) EQ Mode Selections will appear on LCD. If necessary, use Mode Control to scroll to EQ icon
- 5.) Press and release Mode Control
- 6.) EQ options will appear on LCD. Using the Mode Control, scroll to the desired option.
- 7.) Press and release Mode Control to activate the new EQ

Settings: Repeat (File Playback) Function

Select your preferred method of file playback from 5 options:

Normal: Plays all files in order. Play stops after the last file.

Preview: Plays the first 10 seconds of all files in order.

Repeat One: Plays a single file from start to finish continuously

Repeat All: Plays all files in order continuously

Shuffle: Plays all files in a random order

- 1.) Press and release Mode Control. Main menu options will appear.
- 2.) Using Mode Control, scroll to SETTINGS.
- 3.) Press and release on SETTINGS. Settings Options will appear.
- 4.) Scroll to REPEAT. Press and release Mode Control to view REPEAT menu
- 5.) Scroll to desired option. Press and release Mode Control to activate setting

Settings: Auto Off Function

Sets a specified time that the unit will stay on during a period of non-use. After that time, unit will automatically shut down.

Selections available are:

Disable: Unit will not turn off automatically
1 minute: Unit will turn off after 1 minute
5 minutes: Unit will turn off after 5 minutes
10 minutes: Unit will turn off after 10 minutes

- 1.) Press and release Mode Control to see Main menu options
- 2.) Using Mode Control, scroll to SETTINGS. press and release Mode Control to see SETTINGS menu options
- 3.) Scroll to AUTO OFF . Press and release Mode Control
- 4.) AUTO OFF time bar will appear on LCD. Using the Mode Control, scroll to select desired AUTO OFF time.
- 5.) Press and release Mode Control to activate new setting

Settings: Rec Setting Function

You can improve the playback quality of your voice Record files by setting them at a higher level.

“Rec Setting” options are:
Low, Middle and High

Please note that using higher settings will increase the size of the file, which reduces available memory. Lower settings increase the record time.

- 1.) Press and release Mode Control to view Main menu options
- 2.) Using the Mode Control, scroll to SETTINGS. Press and release to view SETTINGS menu options
- 3.) Using Mode Control, scroll to REC SETTING icon. Press and release to view RE SETTING options
- 4.) Use Mode Control to scroll to desired setting.
- 5.) Press and release to activate new setting

Settings: Language Function

Text on the player can be displayed in 5 different languages

Language options:

English
Spanish
Chinese(Simplified)
Chinese(Traditional)
French

- 1.) Press and release Mode Control to view Main menu
- 2.) Using Mode Control, scroll to SETTINGS. Press and release to view SETTINGS menu Options
- 3.) Using the Mode Control, scroll to LANGUAGE icon. Press and release to view language options.
- 4.) Scroll to desired Language. Press and release Mode Control to activate new language.

Setting: LCD Contrast

To adjust the Contrast of the LCD display

- 1.) Press and release Mode Control to see the Main menu options
- 2.) Using the Mode Control, scroll to the CONTRAST icon. Press and release to view the Contrast setting bar
- 3.) Scroll to desired Contrast setting along the bar. Press and release Mode Control to activate new setting.

Setting: Backlight Function

You may adjust the amount of time the backlight stays illuminated.

The available options are: Disable (backlight will not illuminate at all), 5 seconds, 10 seconds, 15 seconds, 20 seconds or ALL (backlight stays on continuously)

Please note that the backlight consumes power from the battery. Shorter periods of backlight result in longer battery life.

- 1.) Press and release Mode Control to view the Main menu.
- 2.) Using the Mode Control, scroll to SETTINGS. Press and release Mode Control to view SETTINGS menu
- 3.) Scroll to BACKLIGHT. Press and release to view Backlight level bar.
- 4.) Scroll to the desired backlight level. Press and release to activate new setting

Setting: Lyric Function

This player is only capable of displaying lyrical content if the lyrics were encoded in the original file. Consult Windows Media Player protocol to download Lyrical content if desired.

Should you wish to have available lyrics displayed on the Player's LCD:

- 1.) Press and release Mode Control to view Main menu
- 2.) Using Mode Control, scroll to SETTINGS. Press and release Mode Control to view SETTINGS menu
- 3.) Scroll to LYRIC icon. Press and release to view LYRIC options.
 - Open Lyric – Displays lyric on LCD
 - Closed Lyric – Does not display Lyrics
- 4.) Using Mode Control, scroll to desired option
- 5.) Press and release to activate new setting

Please note: When a file with lyrical content is being played, and the Open Lyric option has been activated, the lyrics will populate the entire LCD screen.

FM Radio

Using the FM radio

1. With the headphones plugged in, press down on the Mode button to display the menu. Jog ►► twice to highlight the FM Tuner icon. Press down on the Mode button. The FM tuner will open in “Preset Mode” and if no stations are stored a scan and store operation will be performed. During scan and store a || symbol will show in the window. When the || changes to ►, the last station stored will be playing.
2. To enhance performance of scan and store, lay the headphones on a flat surface and stretch out the headphone cord which the player uses as an FM antenna.
3. To step through stored stations, jog the Mode button in the ◀◀ direction. You can also step in the ►► direction **however** you must wait 10 seconds between jogs to prevent activation of a

new scan and store.

4. **Manual Tuning:** Briefly press down on the Mode button to enter the “Manual Mode”. Jog the mode button in the ◀◀ direction to tune down the dial in 100 KHz increments. Jogging the mode button in the ▶▶ direction will move up in 100 KHz increments. Long pressing the mode button in the ▶▶ direction will scan up the dial stopping at the next receivable station.
5. **Storing a manually tuned station on a preset:** Briefly return to FM “Preset Mode” and use ◀◀ jogs to reach the preset location that you wish to overwrite. Return to “Manual Mode” and tune to the station that you wish to store. Quick Press the A-B button to store the station. Switch back to “Preset Mode” to confirm that the station is stored. (Note: a long press on the A-B button will initiate recording the station rather than storing it.) This process can be repeated for up to 10 favorite stations.

6. **FM recording:** To initiate recording from the radio, long press the A-B button. To halt recording, press the Play/Pause/on-off button. Recordings are made in the WAV format. During recording, a countdown HH:MM:SS display shows how much total recording time remains. Available recording time is proportional to unused memory. Unwanted radio recordings must be removed from the player via Windows Explorer or Windows Media Player.
7. **Erasing FM recordings:** Insert the player in the computer. Open My Computer or Windows Explorer. Navigate to the player. Depending on your version of Windows and Media Player, you will see either "Music" and "FM" folders OR "Data" and "Media" folders. If you see a Media folder, open it to find the FM folder. Open the FM folder, which contains the recordings that have been made. Highlight any that you no longer want, hit the delete key, and

confirm.

8. **To leave FM mode:** Long Press down on the Mode button. From the menu, select Exit.

Flash Drive

Your Audiophase player can be used as a Flash Drive to transport documents, pictures and other files between computers. Plug the player into a USB port on your computer. Close the window that pops up. Open “My computer” and double click on the “MP3 Player”, “MTP Player” or “Removable Disk” icon that corresponds to your player.

If Windows Media Player 10 or higher is installed on your computer, you will see “Data” and/or “Media” folders on the player. Use Windows Explorer to drag and drop files to or from the “Data” folder. If you do not see a “Data” folder, then you can drag and drop files to any location on your player.

Deleting Files

Files may be deleted from the player through your computer only. Please follow your specific Operating System’s protocol for deleting files from your player.

Troubleshooting

- 1.) If you experience functional problems, remove the battery for one minute. This will allow the unit to reset. After a period of one minute, re-insert the battery and try the function again. If trouble persists, check the battery power. Low power may affect certain functions. Replace with a new battery if necessary.
- 2.) Unit will not operate if HOLD switch is in the ON Position. Make sure that the hold switch is in the OFF Position
- 3.) If you have any trouble with navigation of the various Menus, or if you have trouble with operating the Mode Control, please refer to the Mode Control Operation section of this manual.
- 4.) For Compatibility downloads, visit <http://www.tgegroup.com/esupport.htm>

Disclaimer

All the information in this document is subject to change without prior notice. The manufacturer does not make any representations or any warranties (implied or otherwise) regarding the accuracy and completeness of this document and shall in no event be liable for any loss of profit or any other commercial damage, including but not limited to, special, incidental, consequential, or other damages.

No part of this document may be reproduced or transmitted in any form by any means without the express written permission of the manufacturer.

All brand and product names used in this document are trademarks or registered trademarks of their respective holders.

Warranty

This product carries a limited 90 day manufacturer's warranty from the date of purchase.

Technical Support

Do not attempt to return this unit to the place of purchase.

If you experience any problems or operational difficulty with this unit, Audiophase is happy to help.

Please call us at 1-818-767-2843

Ask for Audiophase Tech Support, or dial ext. 117